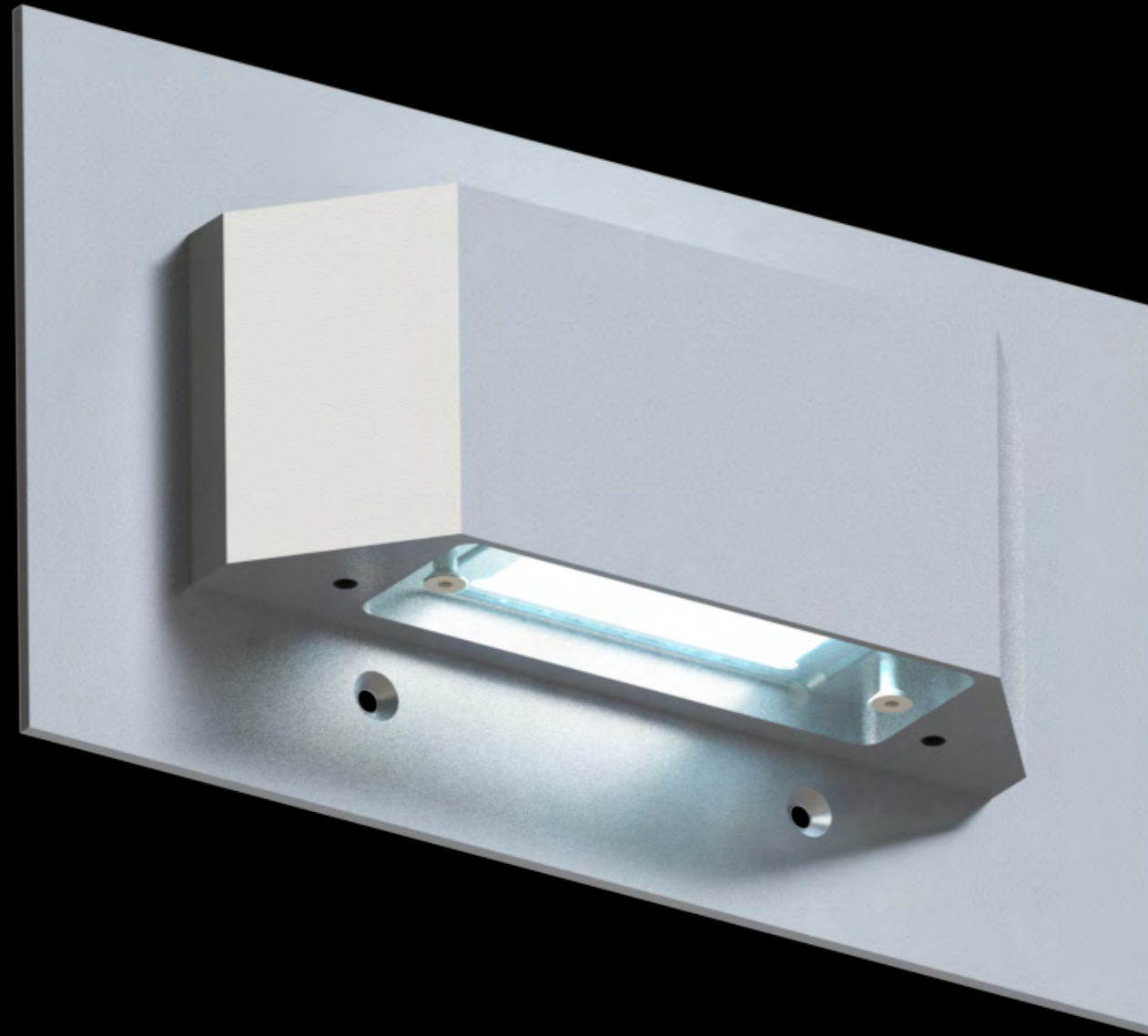


**RALEDWALL® RAWF**



High Performance Wall Washer

# RALEDWALL® RAWF

## RALEDWALL® HIGH LOAD PAVEMENT LIGHTS

Typical wall washer fixtures mainly offering one or two colour temperatures at pure illumination performance. Our high end **RALEDWALL®** fixtures offers full colour to upside and downside direction, both are fully dimmable and the performance is outstanding in this field of applications. The Unibody housing design offers the best protection and durability.

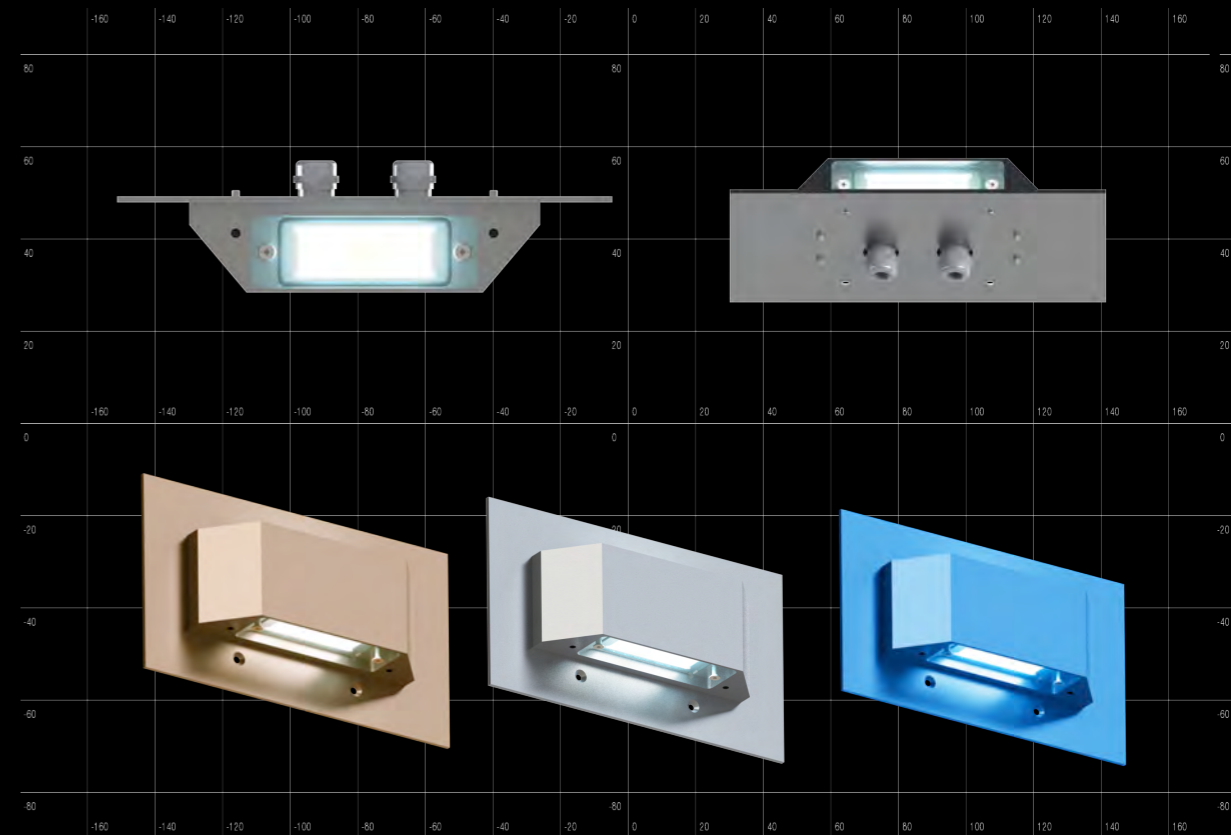
### TYPICAL APPLICATIONS:

Indoor and outdoor wall effects, path and walkway illumination and facade effects.

### UNIQUE FEATURES:

- ✓ unibody design
- ✓ high performance
- ✓ extreme durable
- ✓ full colour
- ✓ high efficient

*„the full colour wall washer“*

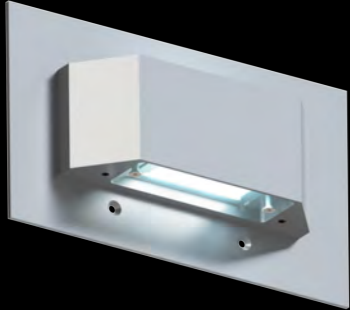




# RALEDWALL® RAWF

Sample order code:

RAWF-60-60-WW-2700K-10W-IP65-DS

Model Code:	Beam Angle	COB	CCT	RAWF (aluminum)	RAWF (V4A)	Protection Degree	Options			
RAWF		WW	1800K	10W	10W	IP 65	Diffuser Satin (-DS)			
		WW	2700K				10W/8W in single colour	10W/8W in single colour	Plug connection (+PC)	
		WW	3000K							10W
		NW	3500K						10W	
		NW	4000K							Special RAL Coating (RALxxxx)
		CW	5000K				10W	10W	Special Eloxal Coating (ELOxxxx)	
		CW	6000K	10W	10W					
		RGB/WW	3000K				10W	10W	Special Eloxal Coating (ELOxxxx)	
		RGB/ NW	4000K	10W	10W					
		R					10W	10W	Special Eloxal Coating (ELOxxxx)	
G		10W	10W							
B				10W	10W	Special Eloxal Coating (ELOxxxx)				
WW/ CW	2500K/7000K	10W	10W				Special Eloxal Coating (ELOxxxx)			
G/ WW	2700K			10W	10W					
A/ WW	2700K	10W	10W			Special Eloxal Coating (ELOxxxx)				
A/ NW	4000K			10W	10W					
A/ UV		10W	10W			Special Eloxal Coating (ELOxxxx)				
R/ CW	6500K			10W	10W					

WW 1800K	WW 2700K	WW 3000K	NW 3500K	NW 4000K	CW 5000K	CW 6000K	RGBWW 3000K	RGBNW 4000K
RED	GREEN	BLUE	WW/CW 2500/7000K	GREEN WW 2700K	AMBER WW 2700K	AMBER NW 4000K	AMBER UV	RED CW 6500K

Standard RAL colours at AL or V4A body:

- RAL9016 (White)/ RAL9004 (Black)
- RAL7016 (Anthracite)
- ELO E6EV1 (Silver)
- special coatings on request